

CERTIFICATE OF LOCATION OF GOVERNMENT CORNER

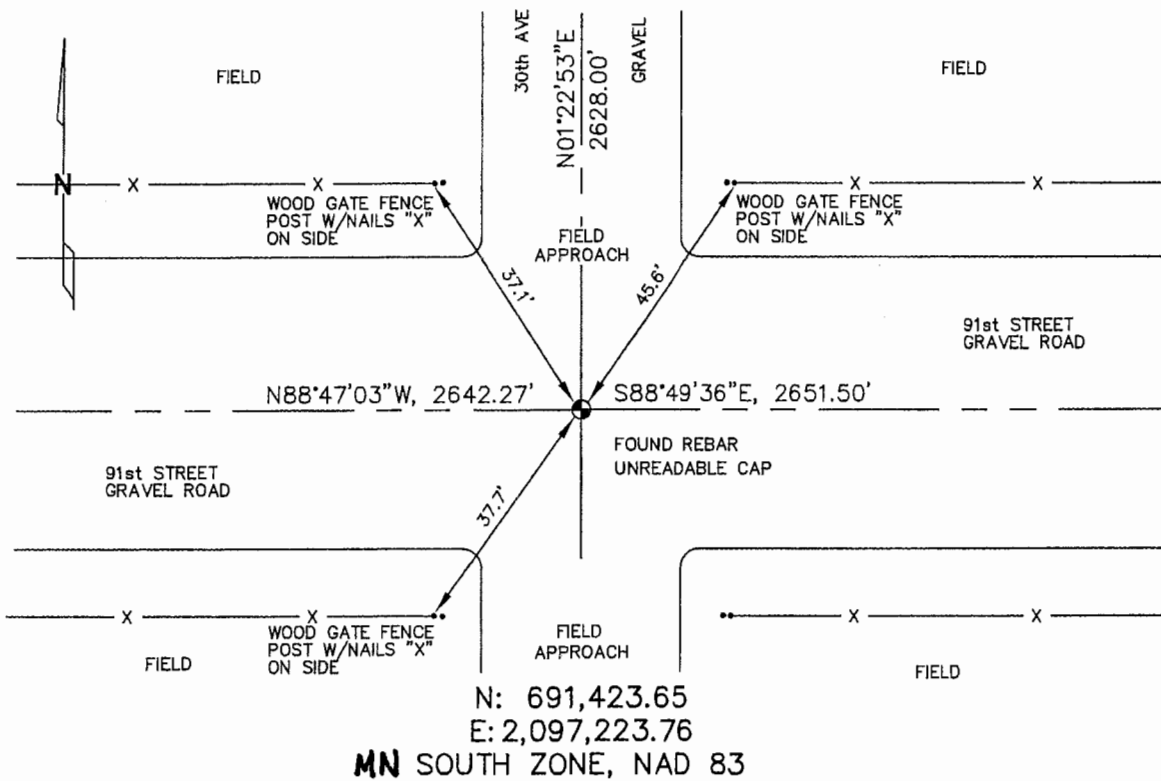
SOUTHWEST Corner of Section 15, Township 106, Range 43, 5th P.M.

STATE OF MINNESOTA, County of MURRAY

At the corner location shown on the sketch :

- On 3/22/2006 found REBER WITH UNREADABLE CAP @
INTERSECTION OF GRAVEL ROADS.
 left monument as found, lowered monument, removed monument (explain)
 On _____ set _____

Sketch of reference ties



Statement of evidence relative to this corner location is on back page

I hereby certify that this document and the data contained herein was prepared by me or under my direct supervision.

Thomas V. Johnson 4/24/06
 Signature Date

- Registration No. 44563
 Land Surveyor, Professional Engineer
 County Surveyor, County Engineer

OFFICE OF THE COUNTY RECORDER

County of _____

SEP 28 2006

I hereby certify that this document was filed in the Co. Recorders office at _____ .M. on the _____ day of _____ A.D., 20

County Recorder James V. Johnson
 By _____, Deputy

DOCUMENT NO. _____

STATEMENT OF EVIDENCE:

SOUTHWEST CORNER, SECTION 15, T. 106 N., R. 43 W.,
MURRAY COUNTY, MINNESOTA

1866

J. W. BISHOP, U.S. DEPUTY SURVEYOR, MONUMENTED CORNER.

3/22/2006

ULTEIG ENGINEERS, INC. SURVEY CREW, BRIAN PAYNE PARTY
CHIEF, FOUND A REBAR WITH AN UNREADABLE CAP.

TIES: NW - 37.1' TO WOOD, GATE POST W/ NAILED "X"
ON ITS SIDE.

NE - 45.6' TO WOOD, GATE FENCE POST WITH
NAILED "X" ON ITS SIDE.

SW - 37.7' TO WOOD, GATE FENCE POST WITH
NAILED "X" ON SIDE.

N - 2628.00' TO W $\frac{1}{4}$ CORNER, SEC. 15.

E - 2651.50' TO S $\frac{1}{4}$ CORNER, SEC. 15.

W - 2642.27' TO S $\frac{1}{4}$ CORNER OF SEC. 16.